

# Reference

## Key to Public Rights of Way

- Footpath
- Bridleway
- Byway open to all traffic

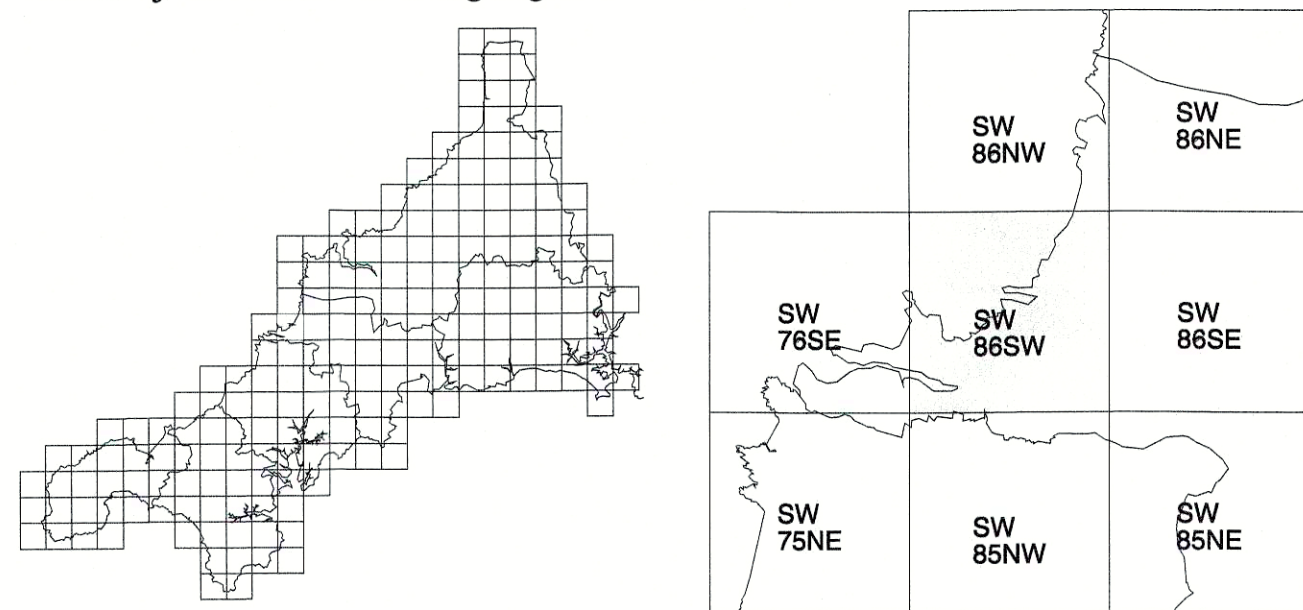
- County Boundary
- District Boundary
- Parish Boundary

TCB - Telephone Call Box  
MS - Milestone  
Cemy - Cemetery  
PO - Post Office  
TH - Town Hall  
Mus - Museum

Ch - Church or Chapel  
BS - Boundary Stone  
PH - Public House  
CH - Club House  
PC - Public Convenience

Scale 1 : 10000

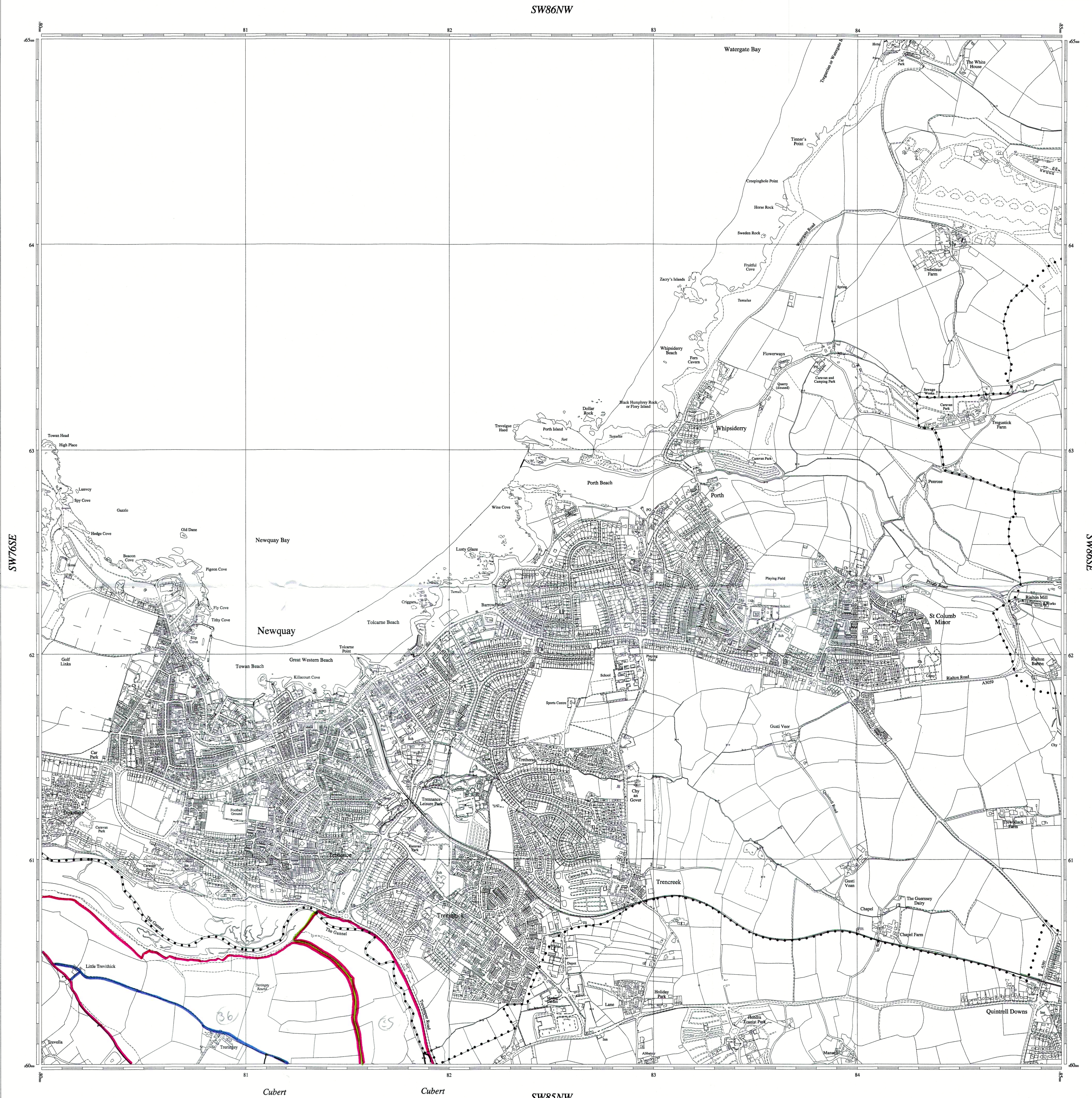
Extent of current sheet is highlighted



The inclusion, on the Definitive Map, of any way as a footpath, bridleway, or byway open to all traffic, is conclusive evidence as to the existence of such a right, at the relevant date on the statement accompanying the map.

The relevant date on the statements relating to the areas covered by this map are as follows:

District of Carrick:  
Parish of Cubert : 1st January, 2000



## Definitive Map of Public Rights of Way

This map is based upon Ordnance Survey material with the permission of Ordnance Survey on behalf of the Controller of Her Majesty's Stationary Office © Crown copyright.  
Unauthorised reproduction infringes Crown copyright and may lead to prosecution or civil proceedings.  
Cornwall County Council, Licence No. LA076538, 2000.

Sheet  
SW86SW

PLAN E